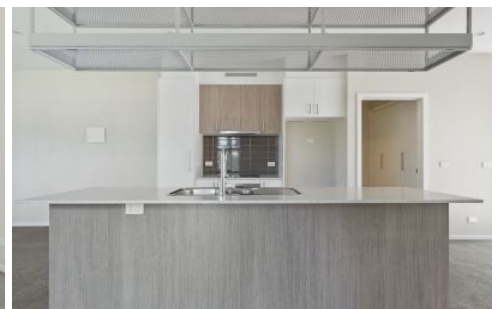


# CARTER + CO



12/233 Flemington Road Franklin ACT

3  2  2 

## Why You Want To Live Here.

Welcome to 12/233 Flemington Road in the beautiful suburb of Franklin. This double storey townhouse offers a comfortable and convenient lifestyle for first home buyers and young couples looking to settle down in a vibrant community. Within close proximity to Light Rail, giving you fast, easy access to Gungahlin Market Place or Canberra City Centre, all without spending a cent on petrol.

The highlight of this property is its clever design, with the living spaces located on the ground floor. As you enter the townhouse from the easy maintenance front courtyard, you will be greeted by a spacious living area that seamlessly flows into the dining space. The central kitchen acts as the heart of the home and features modern appliances, stone

**Type** : Townhouse

**Price** : Auction

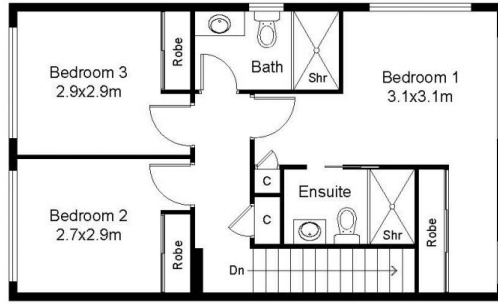
**View** : <https://www.carterandcoagents.com.au/sale/act/gungahlin/franklin/residential/townhouse/8173385>



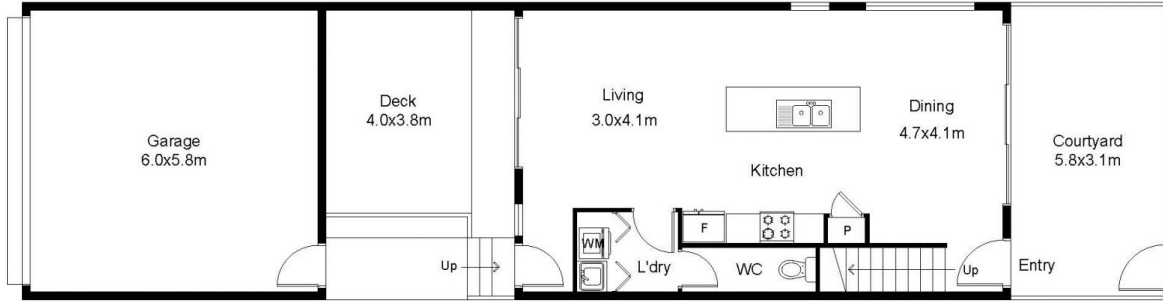
**Sam Howes**  
02 6176 3443

[For full version visit the website](https://www.carterandcoagents.com.au)

<https://www.carterandcoagents.com.au>



FIRST FLOOR PLAN



GROUND FLOOR PLAN

This floor plan including furniture, fixture measurements and dimensions are approximate and for illustrative purposes only.  
BoxBrownie.com gives no guarantee, warranty or representation as to the accuracy and layout.  
All enquiries must be directed to the agent, vendor or party representing this floor plan.

12 / 233 Flemington Road Franklin ACT 2913