

CARTER + CO



11 Willunga Court Watson ACT

3 2 2

Why You Want To Live Here.

Thanks to a smart floorplan, tasteful finishes, and a convenient location, 11 Willunga Court, Watson is a place where you can live where you love. With easy links to all that you need - Dickson shops, nearby Watson shops and even through to Canberra's CBD - as well as close proximity to parks, green spaces, schools, and public transport, you'll have all the space you could want and be as connected as you need.

This home welcomes you inside with a huge open plan living area. Contemporary features, such as the large sliding glass doors that overlook the outdoor areas, make this space feel extra light and spacious. The room is truly versatile - You'll be able to set yourself up for the day in the

Type : Townhouse

Price : \$859,000+

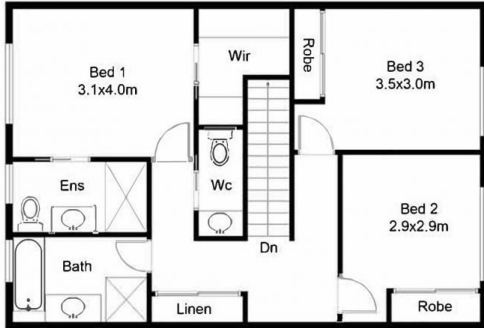
View : <https://www.carterandcoagents.com.au/sale/act/inner-north/watson/residential/townhouse/8159996>



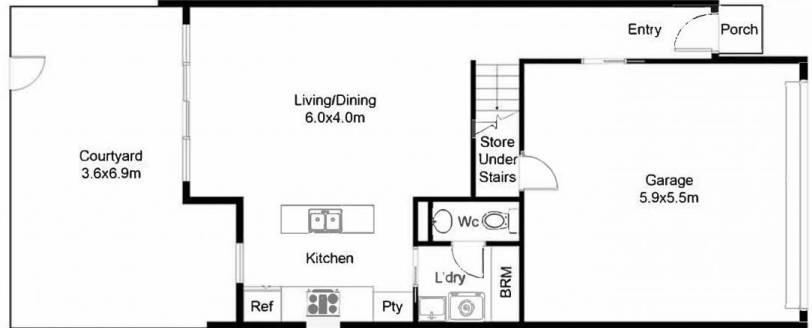
Curtis Dong
02 6176 3443

[For full version visit the website](https://www.carterandcoagents.com.au)

<https://www.carterandcoagents.com.au>



UPPER FLOOR PLAN



GROUND FLOOR PLAN

This floor plan including furniture, fixture measurements and dimensions are approximate and for illustrative purposes only. BoxBrownie.com gives no guarantee, warranty or representation as to the accuracy and layout. All enquiries must be directed to the agent, vendor or party representing this floor plan.

11 Willunga Court Watson ACT 2602