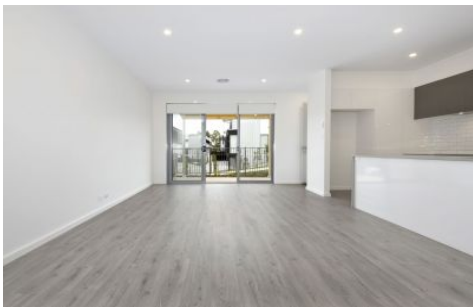


CARTER + CO



33/10 Ellison Harvie Close Greenway ACT

3 2 2

This stunning townhouse presents an excellent opportunity to secure modern, light filled living within walking distance of Tuggeranong's SouthPoint shopping centre.

Positioned on the edge of Lake Tuggeranong, with immediate access to the lake and just a short stroll from popular local Cafe's and restaurants.

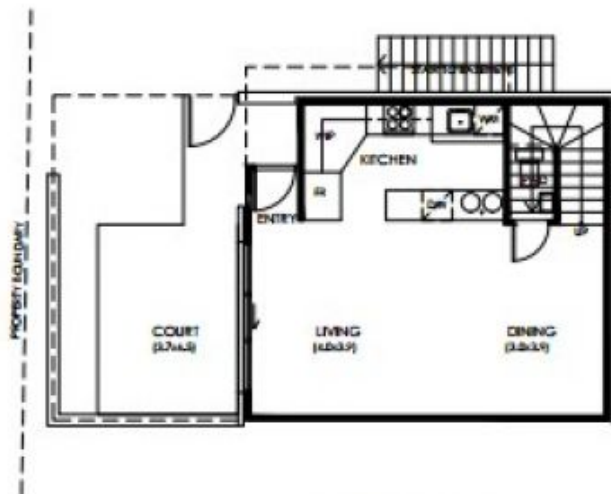
Features include:

- 2 story townhouse
- Split System Air Conditioning
- Induction Cooktop
- Floor to ceiling tiling to bathrooms
- Secure double garage parking
- Open plan kitchen and living
- Stone benchtops

View : <https://www.carterandcoagents.com.au/lease/act/tuggeranong/greenway/residential/townhouse/8048919>



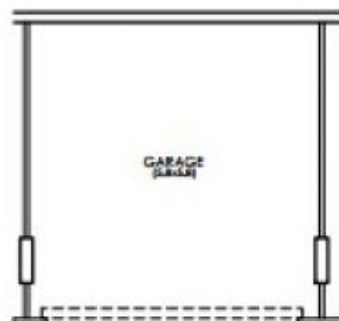
Charissa Turbin
02 6176 3443



GROUND FLOOR PLAN



FIRST FLOOR PLAN



BASEMENT/ CARPARK PLAN



UNIT 33 - BLOCK E

GROUND FLOOR	47.8 m ²
FIRST FLOOR	55.8 m ²
GARAGE	36.0 m ²
TOTAL AREA	139.6 m²
COURTYARD	24.0 m ²



SCALE BAR

3 BEDROOM TOWNHOUSE - DOUBLE GARAGE