




CARTER + CO



1/4 Hooker St Yarralumla ACT

3  2  2 

Spacious, light and airy, this prestigiously located townhouse presents a ready-to-enjoy tri-level layout. Set as part of the quality Westridge Terrace complex, it enjoys a quiet street setting, just metres away from the vibrant Yarralumla cafes, restaurants and a short leisurely stroll to Lake Burley Griffin and surrounding parkland.

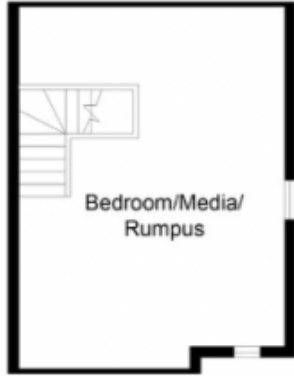
Partially renovated, this delightful townhouse is a hidden oasis featuring flowing open-plan, light-filled living areas with solid hardwood flooring and modern kitchen with granite benchtop leading to the north-facing courtyard garden, where many alfresco dinners have been enjoyed with family and friends.

The first floor houses the light-filled master bedroom, ensuite and the conveniently-located balcony encouraging more time for relaxation as you sip your coffee whilst

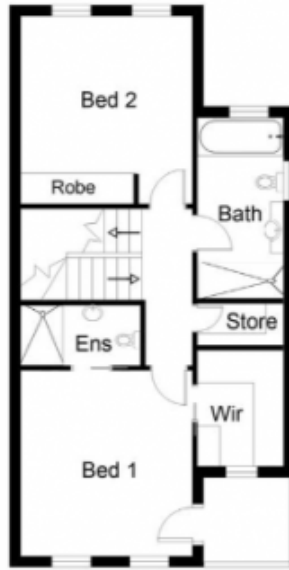
View : <https://www.carterandcoagents.com.au/lease/act/inner-south/yarralumla/residential/townhouse/8017056>



Emma Barclay
02 6176 3443



LOFT
(SECOND FLOOR PLAN) FIRST FLOOR PLAN



GROUND FLOOR PLAN

This floor plan including furniture, fixture measurements and dimensions are approximate and for illustrative purposes only. Boxbrownie.com gives no guarantee, warranty or representation as to the accuracy and layout. All enquiries must be directed to the agent, vendor or party representing this floor plan.