

CARTER + CO



19/107 Limestone Avenue Braddon ACT

3 2 2

PLEASE NOTE: Parking for open homes at Merici College car park and cross the road at Ipima street

View : <https://www.carterandcoagents.com.au/sale/act/inner-north/braddon/residential/townhouse/7599571>

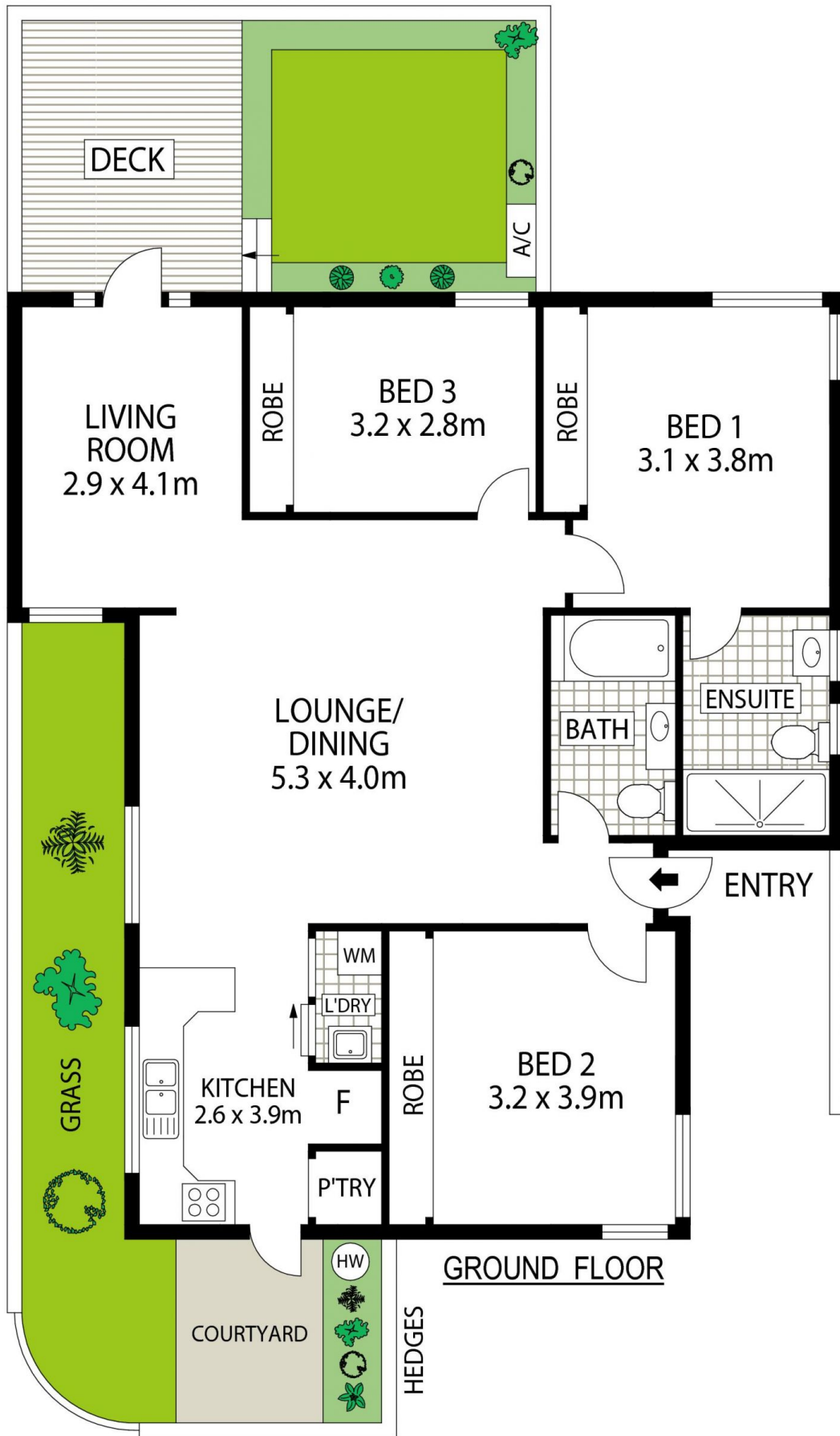
The features you want to know.

- + Cuthbert Whitley designed Canberra redbrick heritage home
- + Single level
- + Fully and sympathetically renovated
- + 3 spacious bedrooms
- + Built in robes to all bedrooms
- + Timber flooring through kitchen and living areas
- + Carpet to bedrooms
- + 2 Separate living areas
- + Stunning designer kitchen with shaker profile joinery
- + High end fixtures and fittings
- + Master bedroom with luxurious ensuite



James Carter And Nik Brozic **Keeley Gillespie**
02 6176 3443 **0426 266 226**

<https://www.carterandcoagents.com.au>



APPROX : INTERNAL AREA :- 112 SQM
 APPROX : EXTERNAL AREA :- 49 SQM

19/107 Limestone Avenue, Braddon

Floor Plan Disclaimer: This floor plan/site plan are intended as an approximate guide only. No representations or warranties of any nature are given or intended and any person using this information other than as a guide should always rely on their own enquiries.