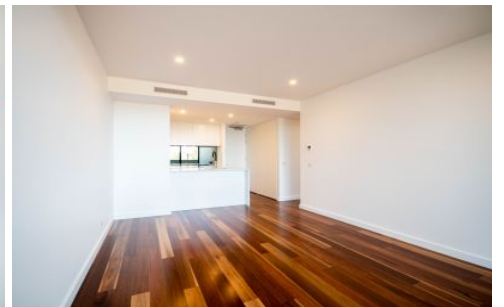


# CARTER + CO



## 227/2 Anzac Park Campbell ACT

2 2 2

In line with Govt restrictions, we are unable to hold open inspections at this time. You are able to apply for this listing off the advertisement. If you wish to make an application, please email [emma@carterandcoagents.com.au](mailto:emma@carterandcoagents.com.au)

**View** : <https://www.carterandcoagents.com.au/lease/act/inner-north/campbell/residential/apartment/6599627>

Within walking distance of Russell offices and the Defence precinct, as well as just a 5 minute drive from the City center, this brand new apartment will surely impress.

Spotted gum timber flooring, an abundance of natural light, and high quality finishes make this the perfect place to call home.

Features include:

- Ducted reverse cycle air conditioning
- Double glazing



**Emma Barclay**  
02 6176 3443

<https://www.carterandcoagents.com.au>